

PET COSMO OVAL SERIES

PET Cosmo Oval Series

Bottlecorp's line of Cosmo Ovals features a range with 5 sizes, available in several neck finishes. The Cosmo Ovals have been used in a variety of markets including Personal care, Household, and Automotive markets.

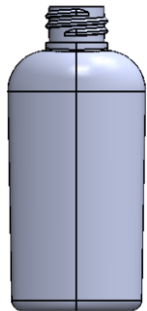
Some examples of its use are ranging from Hand Sanitizers, Lotions, Automotive hand cleaners, Household glue and many more.

The Cosmo Oval's reverse tapered shape gives it an elegant and value added look.

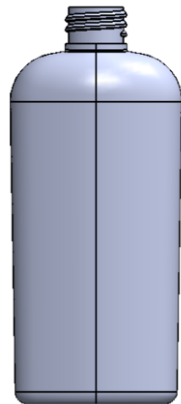


Size	Neck Finish	O.F.C. (ml)	Case Pack	Wt (gm)	Height x Diameter	Label Panel (H)
60ml / 2oz	20-410	67	900/T/*	9.0	3.809" x 1.729" x 1.133"	2.613"
120ml / 4oz	20-410	134	450/T/*	15.0	4.970" x 2.156" x 1.290"	3.633"
177ml / 6oz	24-410	196	300/T/*	21.0	5.900" x 2.400" x 1.400"	4.392"
240ml / 8oz	24-410	250	230/T/*	24.0	6.280" x 2.580" x 1.600"	4.640"
355ml / 12oz	24-410	381	140/T/*	30.0	7.080" x 2.990" x 1.780"	5.263"

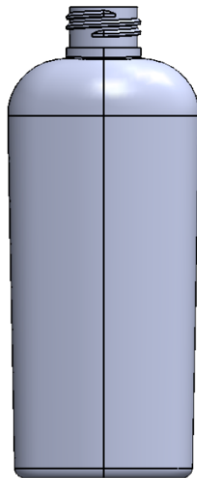
F.C = Fill Capacity; O.F.C. = Overflow Capacity; T = Tumble Pack; * = 15 or 20 Cases/Pallet



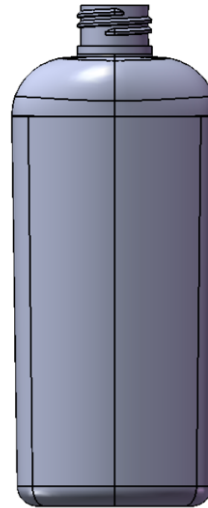
60 ML/2 OZ COSMO OVAL	
Drawing Number	1003
Neck Finish	M20-410
Overflow (ml)	67
Weight (gm)	9
Height x Width x Depth	3.809 x 1.729 x 1.133
Label Panel (H)	2.613
Case Pack	900



120 ML/4 OZ COSMO OVAL	
Drawing Number	1006
Neck Finish	M20-410
Overflow (ml)	134
Weight (gm)	15
Height x Width x Depth	4.970 x 2.156 x 1.290
Label Panel (H)	3.633
Case Pack	450



180 ML/6 OZ COSMO OVAL	
Drawing Number	1041
Neck Finish	M24-410
Overflow (ml)	196
Weight (gm)	21
Height x Width x Depth	5.900 x 2.400 x 1.400
Label Panel (H)	4.392
Case Pack	300



240 ML/8 OZ COSMO OVAL	
Drawing Number	1042
Neck Finish	M24-410
Overflow (ml)	250
Weight (gm)	24
Height x Width x Depth	6.280 x 2.580 x 1.600
Label Panel (H)	4.640
Case Pack	230



355 ML/12 OZ COSMO OVAL	
Drawing Number	1059
Neck Finish	M24-410
Overflow (ml)	381
Weight (gm)	30
Height x Width x Depth	7.080 x 2.990 x 1.780
Label Panel (H)	5.263
Case Pack	140